



# For Sale

## Location

3630 Swisher Road  
Denton, TX 76210

## Net Lease Space

6652 sq. ft. total sq ft

## Price

\$890,000.00

## Features

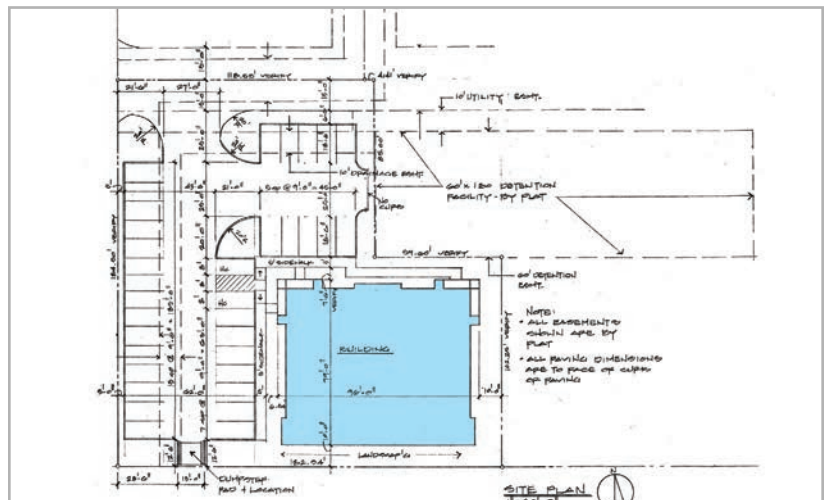
- Strategically located on FM 2181 (Swisher Rd) just West of the Super Wal-Mart
- Ideal location for commercial business
- Located in a fast growing area of Denton County
- Beautiful Exterior
- Plenty of Parking



## Contact

Todd Weaver  
3505 Yucca Drive, Suite 100  
Flower Mound, Texas 75028

todd@weavercommercial.com  
469-635-2833 Office  
469-635-2849 Fax



**WEAVER**  
COMMERCIAL REAL ESTATE